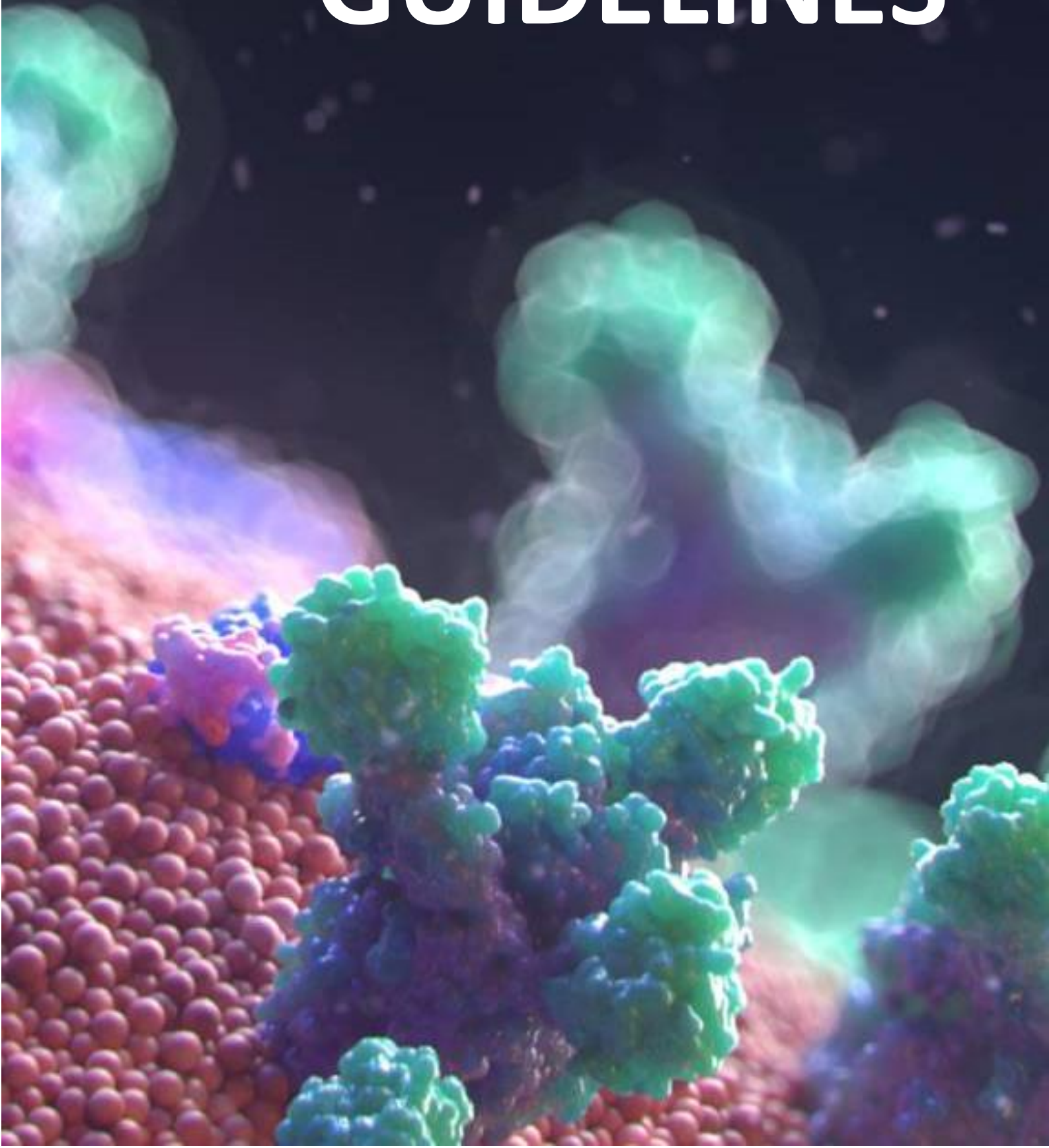


COVID-19 GUIDELINES



INTRODUCTION

As the situation regarding the COVID-19 pandemic across the world is constantly evolving, with countries and nations across the world easing and tightening restrictions as required, we are slowly seeing an opening of society where infection numbers have been declining. With determination to organize international events, the goal is to create and uphold a safe environment, where the health situation of all participants is carefully monitored on a daily basis.

Events are going to be operated in accordance with these Guidelines and governmental authorities. All participants must adhere to the requirements and guidelines issued by the relevant government authorities and requirements of this Guideline.

SCOPE

These Guidelines contain mandatory requirements for all participants organizing, taking part, or attending an event:

- Federation International de Gymnastique officials and staff;
- National Federations officials and staff;
- Event companies' staff and other participating individuals;
- Gymnasts;
- Gymnasts' accompanying person;
- Coaches;
- Judges;
- LOC Administrative staff;
- LOC or local health authorities' Medical staff;
- Volunteers;
- Contractors;
- Any other person (whether legal or natural) involved in the organization of an international event.

INTERNATIONAL COMPETITIONS

All individuals choosing to participate in international events shall be responsible for personal health and travel related risks and follow their local authorities' health and travel advices.

https://www.bud.hu/en/covid_19/information_on_entering_and_leaving_hungary
https://www.bud.hu/file/documents/3/3585/quarantine_form_eng.pdf

Other participants' health and safety must be respected at all times, and all actions are to be taken responsibly, abiding by any specific requests or requirements by the organizers, FIG, or local authorities.

Each delegation has to nominate a COVID-19 contact person (with mobile phone number), who has the sole responsibility for all matters concerning COVID-19 and the associated safety measures.

Increased hygiene practices and disease prevention measures should be identified and met at all future events and activities, including implementing and encouraging proper respiratory etiquette and personal hygiene.

PLEASE NOTE!

In case a participant is diagnosed by COVID-19 and sent to quarantine, the occurring costs of the quarantine (accommodation, meals, transfers, further tests...etc) must be covered at their own expense.

LOC will oversee the following areas:

1. Compliance with the safe distancing measures by ensuring physical distancing is observed in queues and lounges.
2. Check that everyone is wearing their masks at all times.
3. To advise individuals about the importance of adhering to the safety measures.
4. Any other duties assigned.

EVENT REQUIREMENTS

PRIOR TO EVENT

1. Participants of international sports events to be organized in Hungary arriving from countries in the green category are allowed to enter Hungary without restriction, but all delegates must produce one negative SARS-CoV-2 (molecular biology examination in compliance with professional medical practice) test with at least 5 days at their own expense. Results must be provided to the FIG and the LOC.
2. Participants of international sports events to be organized in Hungary arriving from countries in the yellow and red categories – excluding spectators – are allowed to enter Hungary without restrictions. This means: persons with individually addressed invitation letters issued by the official organizer of an international sports event to be held in

Hungary – other than participants –, sportsmen and sport experts invited by a Hungarian sports organization or national association, and persons participating in the management of the event are allowed to enter Hungary if they prove with a Hungarian or English document, including the results of two SARS-CoV-2 tests (molecular biology examination in compliance with professional medical practice) performed at two different times with at least 48 hours between them in the course of the preceding 5 days, that the SARS-CoV-2 coronavirus was not detected in their bodies at the time of the tests.

In short:

- arriving from **green** countries – 1 negative SARS-CoV-2 test needed - proved with a Hungarian or English document + invitation letter from LOC
 - arriving from **yellow** or **red** countries- 2 negative SARS-CoV-2 test needed - proved with a Hungarian or English document + invitation letter from the LOC
3. Gymnasts should avoid taking public transport and must avoid public gatherings; and make use of private hire service or own transport to make their way to the airport/train station.
 4. All persons should keep high-level of personal hygiene and monitor their temperature and check for any symptoms of COVID-19 on a daily basis for 3 days prior to their departure.
 5. Face masks should be worn throughout the entire journey to the host city;
 6. Group travel is advised only amongst delegations that have been training together.

DURING EVENT

All participants, officials, staff, volunteers, and any other person involved in the event must wear face masks at all times in the hotel, transport, and venue unless stated otherwise. Non-compliance will result in denial of entry to the venue, and may result in a ban from the event.

All participants must adhere to instructions by the LOC, its staff, its volunteers or any representative of FIG or local health authorities. In case a participant is violating the protocols of the LOC and the FIG, he/she will receive a fine along with suspension from the event.

EVENT SERVICE

a. TRANSPORT

i. Participants

- Face masks must be worn at all times when using any kind of transportation, whether official or public;
- If needed, physical distancing measures might apply and must be observed, with space blocked between persons of different delegations;

- Proper respiratory and personal hygiene measures must be observed.

Proper respiratory and personal hygiene means:

- Covering your mouth and nose with your bent elbow or tissue when you cough or sneeze.
- Disposing of the used tissue immediately and wash your hands



ii. LOC

- Transfer vehicles going to be disinfected after every group transfer. Tissues, disinfectant wipes and alcohol-based sanitizers would be available in the vehicles, along with lidded bins for safe disposal of used tissues;
- Drivers would disinfect their car after every trip.
- Attendees and drivers are required to keep their face mask on throughout the trip.
- The wearing of face masks by anyone using the official transport would be supervised and enforced by the LOC; without a face mask, a person is not going to be transported;

b. HOTEL, ACCOMMODATION AND COMPETITION VENUE

i. Participants

- National Federations which choose double occupancy rooms for their gymnasts are responsible for ensuring proper health checks have been carried out and in case one of the gymnasts is infected the National Federation is responsible for the isolation of both gymnasts.
- Travel history forms should be collected by the National Federations and are to be submitted online or as otherwise requested by the FIG and LOC.
- A laminated card would be provided to every attendee with the key information regarding COVID-19.

ii. LOC

- Choice of official hospitality package is mandatory;
- Body temperature checks would be set up upon entry into the venue, with protocols in place for immediate testing of any individual with a temperature above 37.5 degrees (C°);
- Cleaning protocols: provided for all areas within the venue, with special attention paid to high traffic areas, such as sanitary installations.

c. ACCREDITATION

- The furniture in the accreditation area would be separated with at least 1m distance;
- Entry to the accreditation area will only be allowed if a face mask or plexi shield is worn;
- Floor distance markings must be placed to guide queue formation. Should a queue of more than 10 people be formed in the accreditation area, LOC would allocate security to manage the queue so there is a physical distance of at least 1m between each person and no obstruction to common pathways. One person from one delegation is requested to fulfil the accreditation procedure!

d. MEALS

i. Participants

- Meals should only be consumed within the space allocated by the LOC with respect to distancing rules;

ii. LOC

- Masks would be worn at all times by LOC/Hotel staff managing the distribution of food.

e. LOUNGE (GYMNASTS, JUDGES) – LOC

- Participants are to be encouraged to return to the hotel when not attending a match or training;
- Lounges would be available with physical distancing of at least 1m at all times;
- Cleaning protocols apply to lounges as well.
- Food/snacks provided would be packed individually and only be made available in a designated area of the lounge.
- Health-advisories would be displayed in common areas.

VENUE

a. TRAINING HALL

i. Participants

- Gymnasts are allocated practice time on specific apparatus in the training hall before the competition;
- Gymnasts must abide by practice schedule given and prevent any unnecessary interactions with gymnasts from other teams;
- Masks must be worn by all individuals in the training hall, except for gymnasts.
- Gymnasts are requested to use hand sanitizers as many times as possible during their training time.

ii. LOC

- Common areas in training hall would be cleaned with disinfectant periodically
- Health-advisories would be displayed at common areas.

b. COMMON AREA – LOC

- Handwashing amenities with soap and water, non-contact air hand dryers or paper towels in toilets would be available
- Toilets and changing rooms must only be used in small groups while maintaining a distance of at least 1m, and enforced by LOC. Showering is prohibited.
- Hand-sanitizing products in common shared areas, elevators and all rooms/areas would be placed and available during the event;
- Proper safe-distancing markers placed on the floor throughout the venue where crowd formation is a risk

c. ENTRANCE AND EXIT – LOC

- i. LOC ensures a one-way system of entry and exit to the venue to avoid individuals crossing paths;
- ii. Temperature screenings would be conducted at the entrance of the venue. Anyone with a body temperature of 37.5 degrees (C°) will not be allowed to enter.
- iii. LOC ensures proper floor markings are placed to maintain distance of 1m between people in the case of queue formation at the entrance to the venue.
- iv. LOC ensures that everyone is complying with floor markings and mask wearing at all times.

d. FIELD OF PLAY – LOC

- Periodic disinfection of floorings, desks and seats, audience stands and other common areas.

e. SPECTATORS – LOC (only applicable if the competition is not a closed-door event)

- Spectators may only be permitted to attend the event upon consultation and prior approval by the FIG if national health and medical regulations are allowing presence of spectators;
- Where spectators are to be permitted, limited seating capacity would be enforced.
- Rows and sections of seats would be blocked to ensure social distancing of at least 1m between separate groups of spectators;
- Signage and floor markings would be placed to remind spectators to maintain social distance;

- All seats would be disinfected daily before entry and after exit of spectators;
- Spectators must wear masks at all times. Where masks are not worn, entry to the venue would be denied, and individuals would be removed from the venue in case of non-compliance;
- Temperature screenings would be conducted at the entrance of the venue for all spectators. Anyone with a body temperature of 37.5 degrees (C°) will not be allowed to enter.

COMPETITION PROCEDURE

a. SPORT SPECIFIC

- The competition and apparatus order will be discussed between the FIG and LOC to allow for lighter competition schedules, in order to avoid crowded venues at all times.
- Judges must only remove their masks when entering the Field of Play. They have to pay attention to maintain the physical distance (at least 1m), avoid unnecessary contacts and follow the pre-determined pathways.
- Judges must sanitize their hands upon entry and exit from the FOP.

b. MARCH-IN

- Gymnasts must only remove their masks when entering the Field of Play;
- March-in procedures for gymnasts for all apparatus are compulsory.

c. DURING COMPETITION

- Gymnasts' entourage shall sanitise their hands before entering and must wear masks while on duty in the field of play.
- Gymnasts must maintain physical distance.

d. END OF COMPETITION

- Gymnasts and judges should leave the venue and return to the hotel as soon as all competition procedures are over. Showering in the changing room is prohibited.

e. MEDICAL SUPPORT

- Isolation room would be provided for persons who are ill and exhibit symptoms of COVID-19.

- In the event that a large number of delegates and/or staff are being exposed, a large space would be provided for the persons to be quarantined.
- In the case of confirmed COVID-19 during the Championships the control power is going to be moved to the local health authority from the LOC.
- *If there are gymnast(s), Delegate(s) or media with confirmed COVID-19 case(s) during an event, the following steps would be taken:*
 - The person must be quarantined immediately in the isolation room;
 - To inform the local public health authority and cooperate with them on the next steps;
 - Full report provided to FIG staff; name of person confirmed with COVID-19, National Federation, locations of the individual from the time of arrival to the country, date when symptoms start to show;
 - Contact tracing to be done to track anyone who may have been in contact with the person (including travel period);
 - All members of the country's delegation should be isolated and be observed for symptoms related to COVID-19;
 - Gymnasts, entourage, officials, media and delegates shall return to the hotel in small batches and remain in their respective rooms for further instructions by the local public health authority;
 - If anyone starts to feel unwell and/or exhibit symptoms of COVID-19, they shall contact the LOC to arrange medical support;
 - Isolation rooms shall also be prepared for staff who have come in contact with the infected person;
- *If there is staff, volunteer(s) from the LOC with confirmed COVID-19 case(s) during an event, the following steps would be taken:*
 - The person must be quarantined immediately in the isolation room;
 - To inform the local public health authority and cooperate with them on the next steps;
 - Following an evacuation plan to have the person transported to a medical facility instructed by the local healthy authority;
 - Full report provided to FIG staff; name of person confirmed with COVID-19, National Federation, locations of the individual from the time of arrival to the country, date when symptoms start to show;

- Contact tracing to be done to track anyone who may have been in contact with the person (including travel period);
 - If the person has not been in the same room with anyone and/or is not assigned any duties in the venue upon contact tracing, it will not require a decision to suspend the event and operations may resume after disinfecting common areas and rooms where the person has been;
 - Gymnasts, entourage, officials, media and delegates shall return to the hotel in small batches and remain in their respective rooms for further instructions by the local public health authority;
 - If anyone starts to feel unwell and/or exhibit symptoms of COVID-19, they shall contact the LOC to arrange medical support;
 - Isolation rooms shall also be prepared for staff who have come in contact with the infected person.
- Participants entering events will have to follow all requirements and instructions given by the FIG and LOC.

AFTER EVENT

- Anyone who tests positive for a COVID-19 infection within 14 days after leaving the host country must contact the LOC. The LOC will have to conduct contact tracing with all persons who have been in contact with them and request them to stay home for 14 days while observing for symptoms.

MEETINGS

- In person meetings would be kept a minimum physical distance of 1m apart.
- Face masks must be worn by the participants.
- At the technical meeting one person per delegation is allowed to enter.
- Participants must sanitize their hands upon entry to and exit from the meeting room.