

AI Description

About AI Used in JSS ---Two AI technologies---

1. AI that recognizes skeletal joint coordinates data from camera images.(Deep Learning base)
2. AI that recognizes elements from the time-series skeletal joint coordinates data. (Rule base)

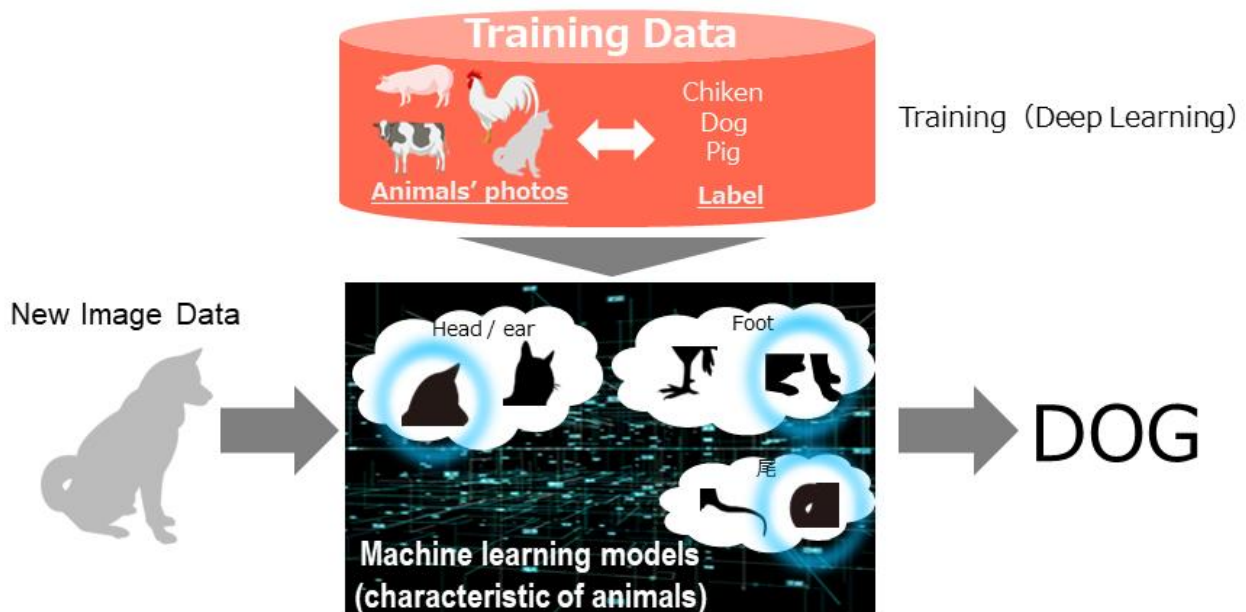
The structure of the gymnastics elements and the certification criteria Following the CoP are programmed inside of JSS to analyze the movement and evaluate the elements.

Tips

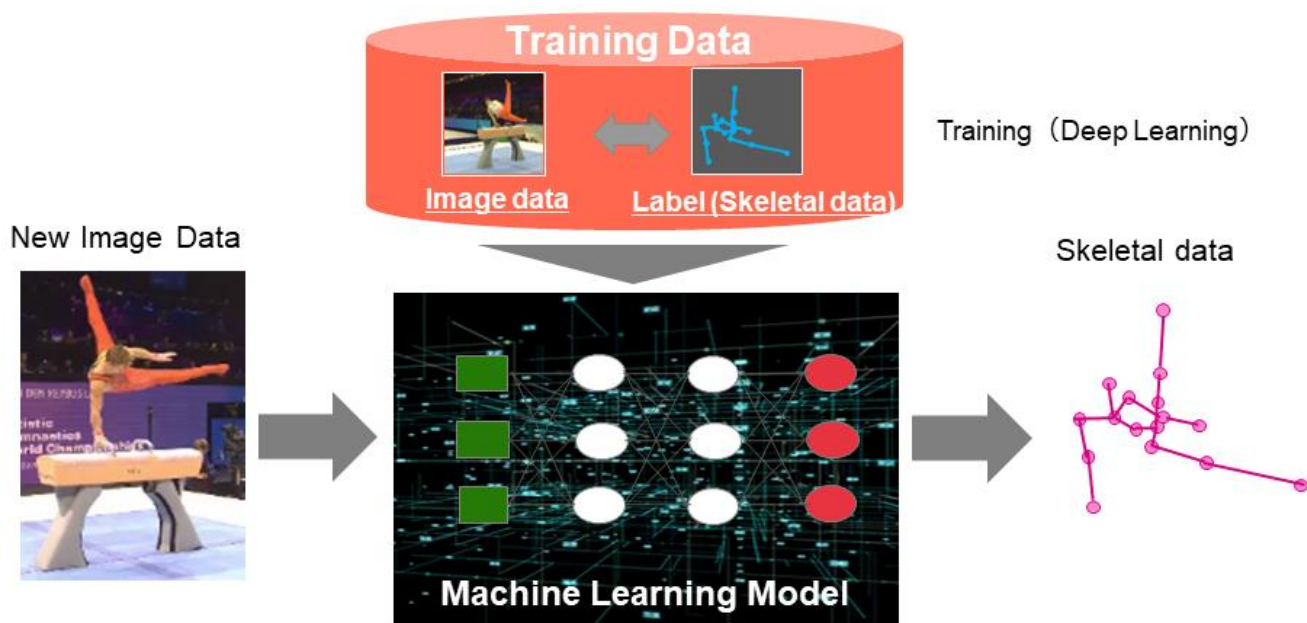
- The advantage of AI judgment is that it does not get tired like humans, so it can always judge by the same standard from morning until late night.
- JSS doesn't use generative AI. It is different from X-ray and safe for the human body.
- In order to maximize the value of useful AI that brings innovation and to continue supporting a sustainable society, Fujitsu promotes "AI Ethics and Governance" for the implementation of AI Ethics.

<https://www.fujitsu.com/global/about/research/technology/ai/aiethics/index.html>

Introduction: How AI (machine learning) generally works

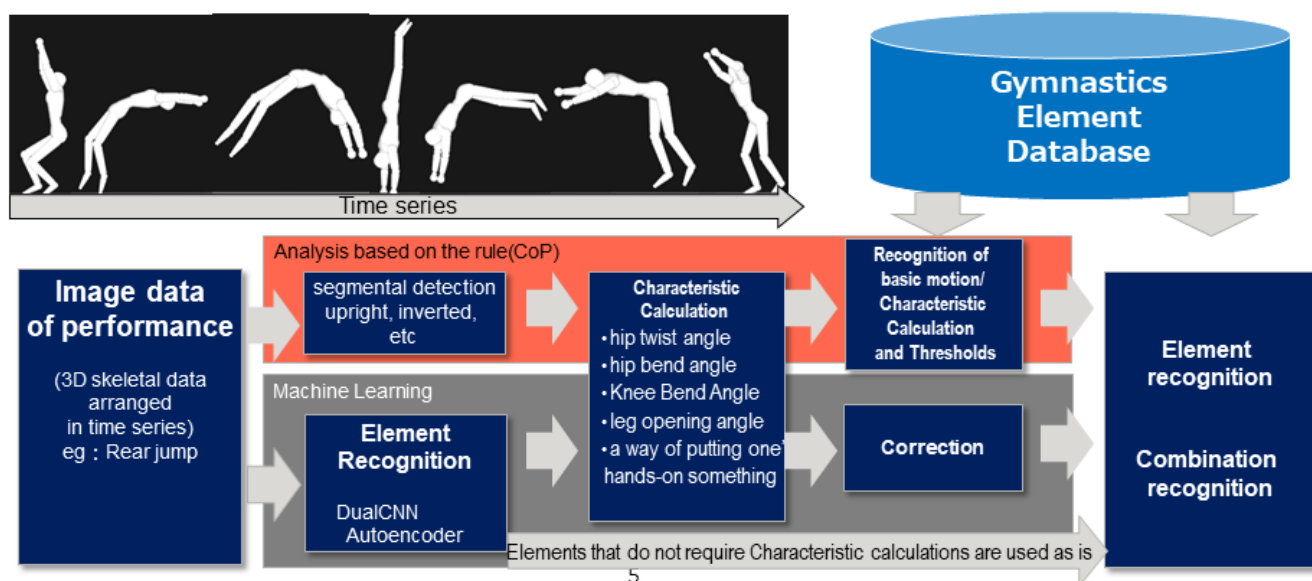


How JSS (Judging Support System) gets skeletal joint coordinates data



How JSS evaluates what element was performed

JSS decomposes a sequence of actions into the common motions that make up an element and then recognizes an element as a combination of these motions.



Other Related Articles

[Element Recognition Criteria Top](#)